

MFP500-EX

Improve Picture Quality with Home Theater Power Conditioners by Panamax



MFP500-EX MAX® FLAT PANEL

CLEAN POWER FOR PLASMA, LCD, & DLP HDTV'S

1 Improves Picture Quality

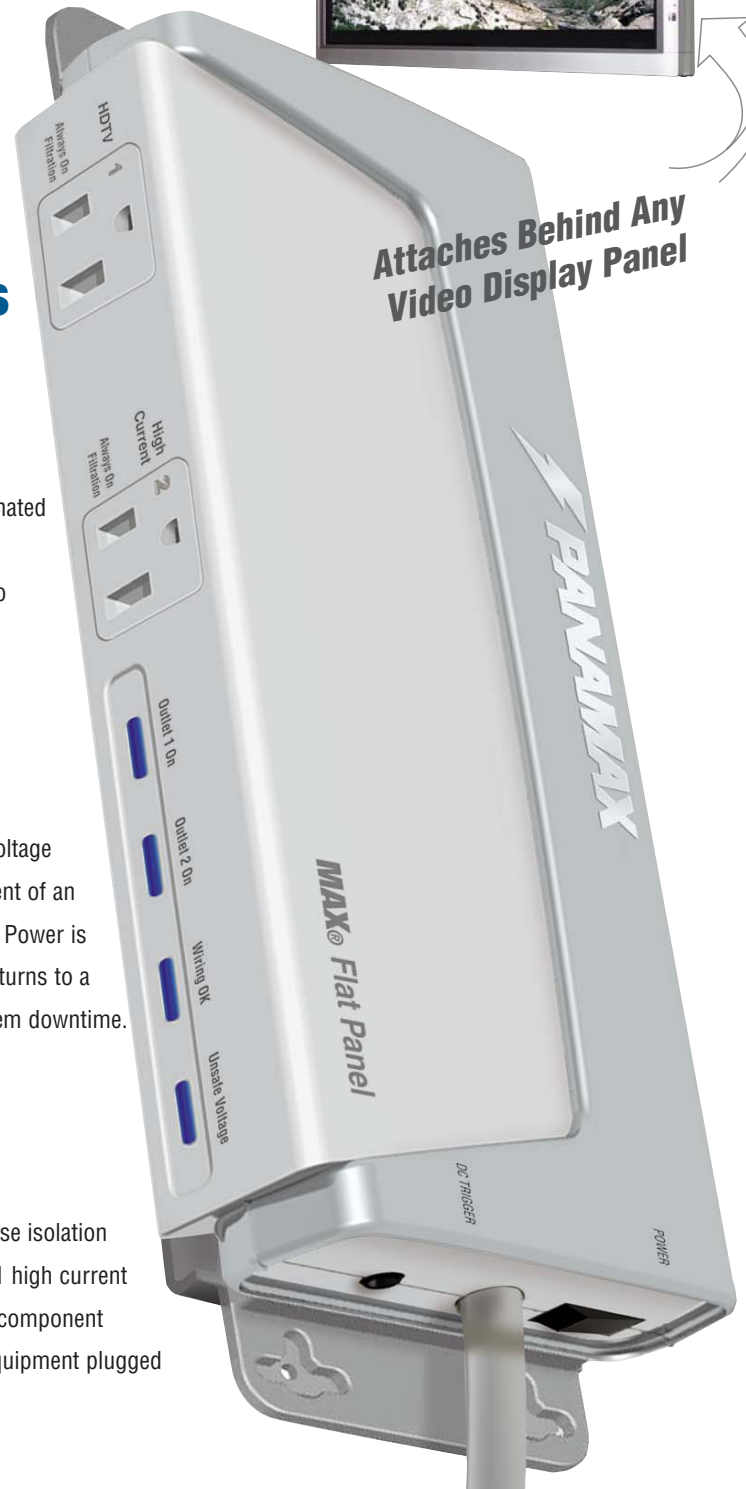
LEVEL 2 Power Cleaning and Filtration eliminates common symptoms of contaminated power (including loss of detail, and visual artifacts) and allows your A/V equipment to perform up to its full capability.

2 Monitors Incoming Line Voltage

Panamax's patent pending AVM™ circuitry continuously monitors the incoming line voltage and disconnects your equipment in the event of an over voltage or under voltage (brownout). Power is automatically reconnected when voltage returns to a safe level, eliminating service calls or system downtime.

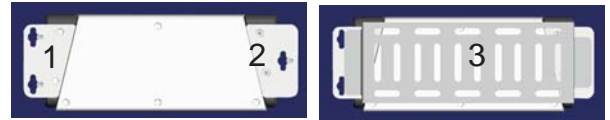
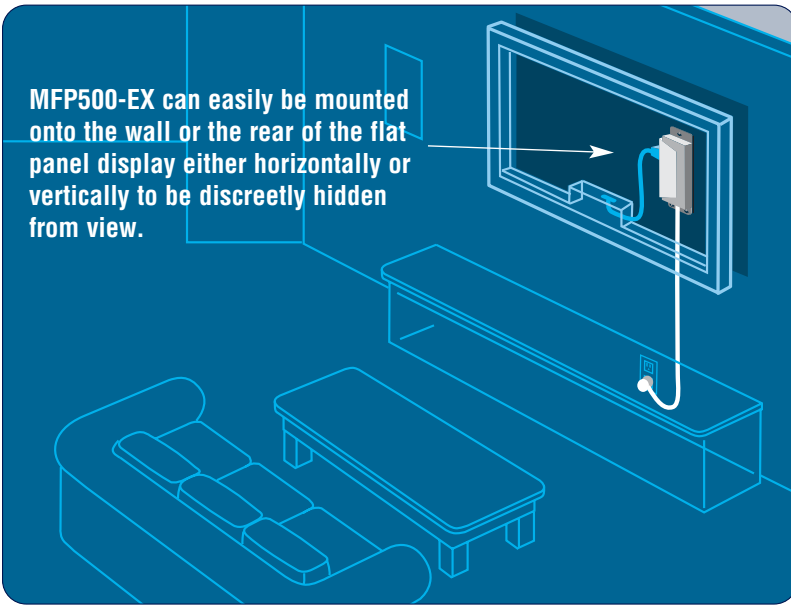
3 Reduces Cross-Contamination Between Components

The MFP500-EX is designed to provide noise isolation between 2 isolated outlet banks including 1 high current outlet so that any noise created by an A/V component can not contaminate the power going to equipment plugged into another outlet bank.

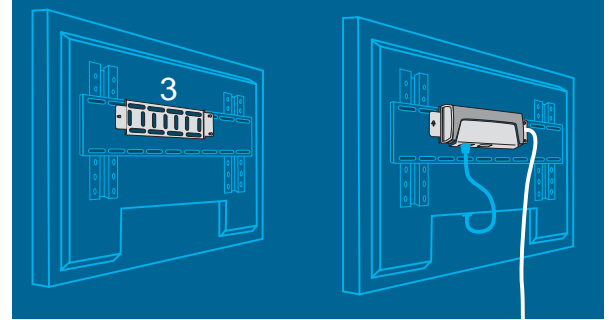


Attaches Behind Any
Video Display Panel

MFP500-EX UNIVERSAL MOUNTING APPLICATIONS



MFP500-EX comes with wall mounting attached (1 & 2). Unit can be mounted onto the wall or onto the back of the display by using the included universal display mounting bracket and hardware as shown below (3). Screws and eyelets are included. Unit can be installed vertically or horizontally.



Unit shown mounted directly onto back of flat panel display.

MFP500-EX SPECIFICATIONS

AC Specifications:

Protect or Disconnect™ Circuitry	Yes
AV (Automatic Voltage Monitoring) Circuitry*	Yes
Auto-resetting Overvoltage Shutoff	144V ±8V
Auto-resetting Undervoltage Shutoff	90V ±6V
Thermal Fusing	Yes
Line Voltage	120VAC, 50/60Hz
Initial Clamping Level	200V Peak, 141V RMS
UL 1449 Suppression Rating	400V
UL 991 Electronic Safety Circuit	Yes
Protection Modes	L-N, L-G, N-G
Maximum Current Rating	15A (1800W)
Single Pulse Energy Dissipation	1875 Joules
Peak Impulse Current	65,000 A
EMI/RFI Noise Filtration	53dB (100kHz - 1 MHz)
Number of AC Outlets	2
Signal Line Module Interface	Yes
AC Cord Length	8 Feet
Plug Type	Straight Plug 5-15 NEMA
DC Trigger Input	3-18VDC non-polarized
Response Time	< 1ns

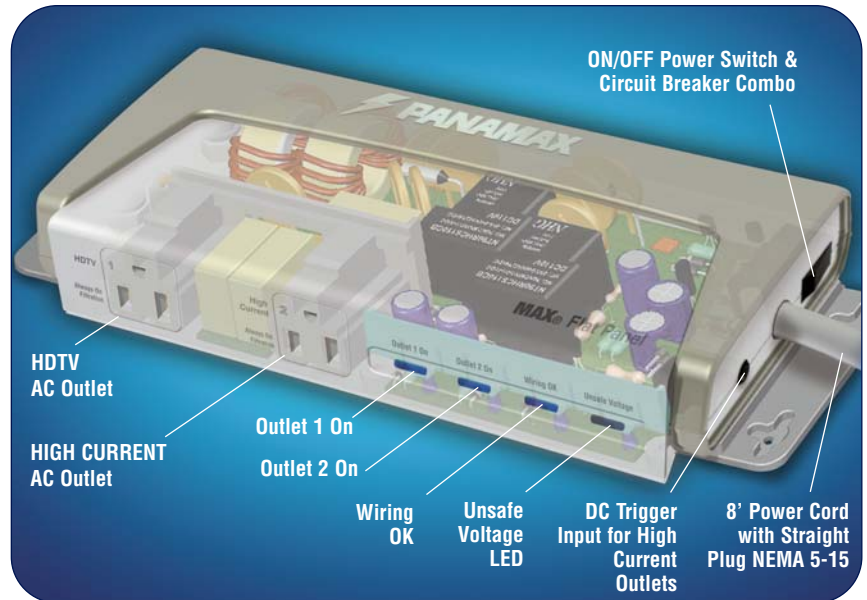
General:

Lightning Protection	Yes
Product Warranty	Lifetime
Connected Equipment Protection Policy	Up to \$5,000,000

Specifications subject to change due to product upgrades and improvements.

Designed in U.S.A.
Made in China

MFP500-EX FEATURES



The MFP500-EX is designed and engineered specifically for optimum power conditioning for plasma, LCD, and DLP HDTV's. Panamax uses only the highest quality materials, parts and workmanship to manufacture its products.

UPC's, QUANTITIES, WEIGHTS & MEASUREMENTS FOR ORDERING & SHIPPING

MODEL MFP500-EX		UNIT CARTON (POS BOX)			INNER CARTON			
Dimensions	Weight	Dimensions	Weight	UPC	Qty.	Dimensions	Weight	UPC
8.5" x 3.75" x 1.6" w/brackets 10" x 3.75" x 1.75"	1.8 lbs	12.5" x 8.5" x 2.125"	2 Lbs	0 50616 00801 3	2	12.5 h" x 8.5 w" x 2.125 d"	4.1 Lbs.	3 00 50616 00801 4

Model: MFP500-EX • SELL PRICE US \$299.95

MASTER CARTON			
Qty.	Dimensions	Weight	UPC
6	13" x 10" x 14"	12.5 Lbs.	5 00 50616 00801 8



1690 Corporate Circle, Petaluma, CA 94954 • 800-472-5555 or 707-283-5900 • Fax - 707-283-5901 • www.panamax.com

© 2005 Panamax. Panamax, MAX and the Panamax logo are registered US trademarks of Panamax. Protect or Disconnect and AVM are trademarks of Panamax. SIDACTor is a registered US trademark of Teccor Electronics, Inc.